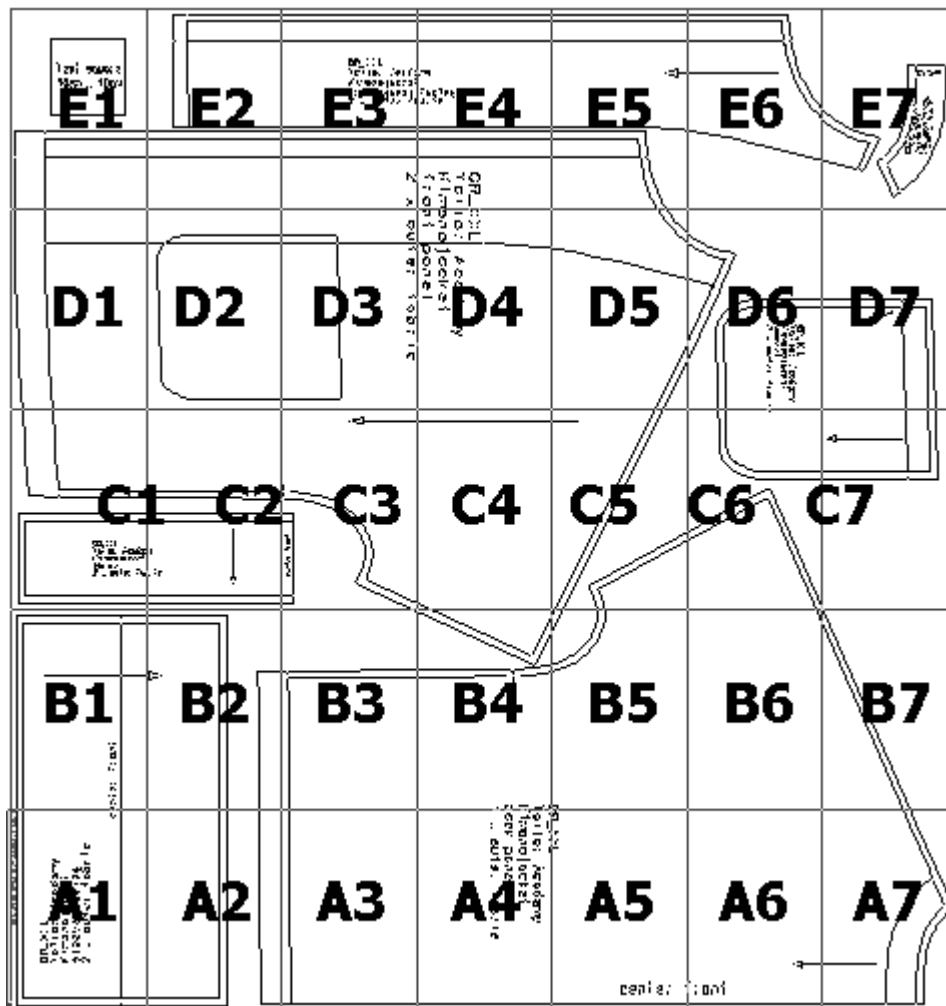


Printing overview

Important: Please print the test page to ensure your patterns are printed in the correct size. The test page and printing instructions are included in the downloads folder.



cen

C i r q a f r e f n o x Z
g u i c a f e v e e l s
f j e k c a f o u n o i K
A c p a c y r o l i d T
G R _ S

((A,02): Kimono jacket.mdl (..\Tailor Academy_new\))

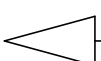
(A,03) : Kimono jacket.mdl (..\Tailor Academy_new\)	

ilior Academy
mono jacket
ck panel
X outer fabric

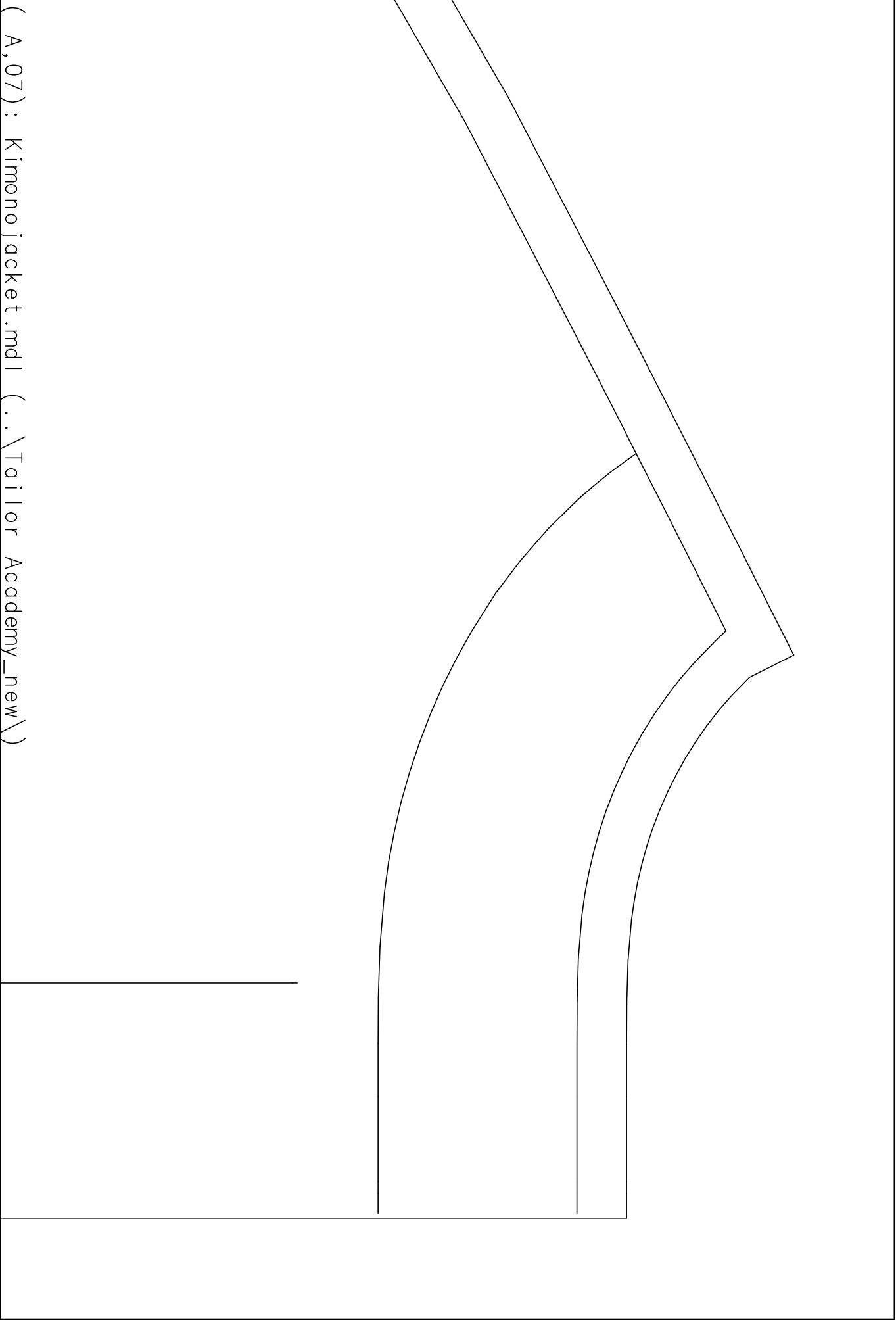
(A,04) : Kimono jacket.mdl (..\Tailor Academy_new\)

center

(A,06) : Kimono jacket.mdl (..\Tailor Academy_new\)

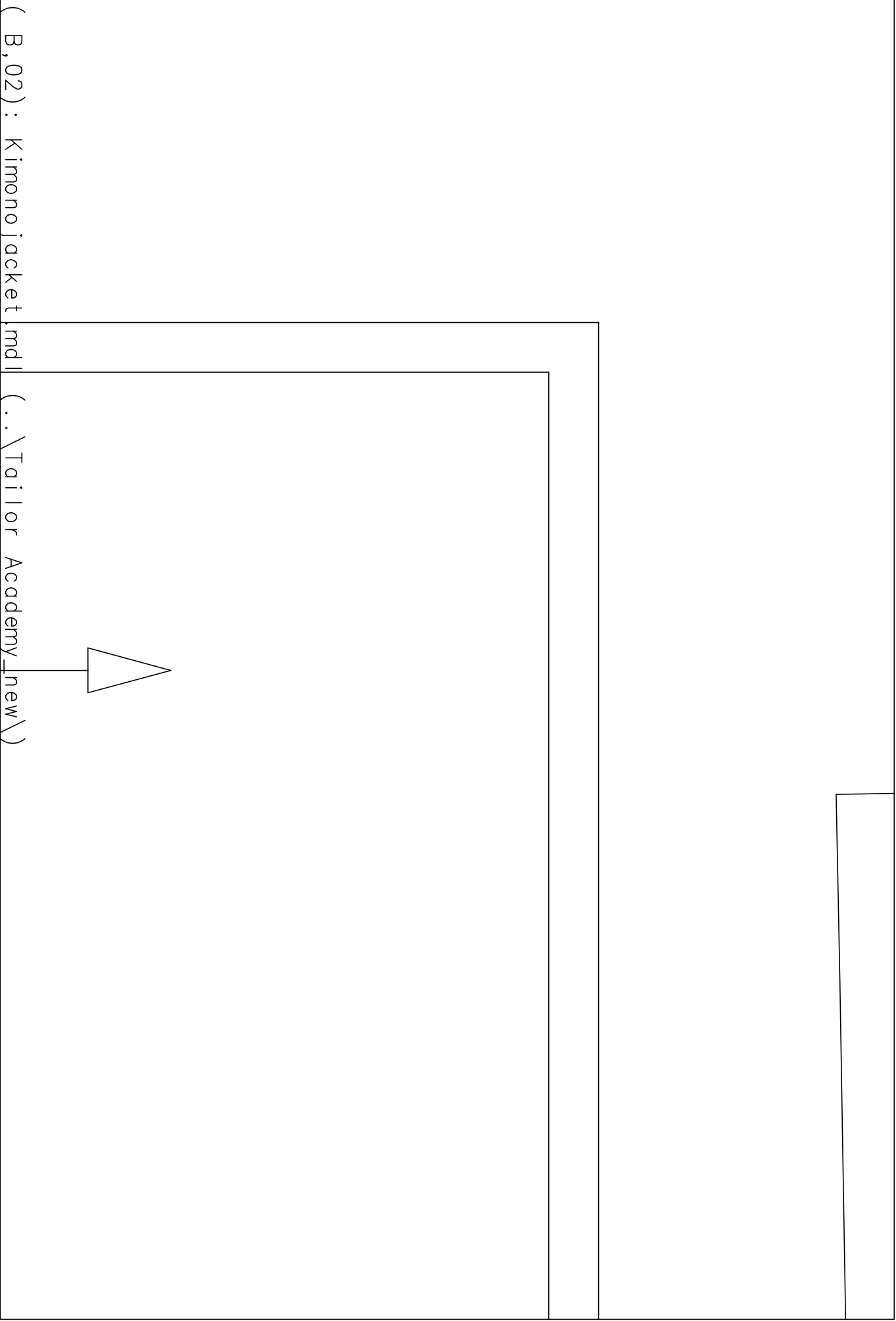


front



front

(B,01): Kimono jacket.mdl (..\Tailor Academy_new\)



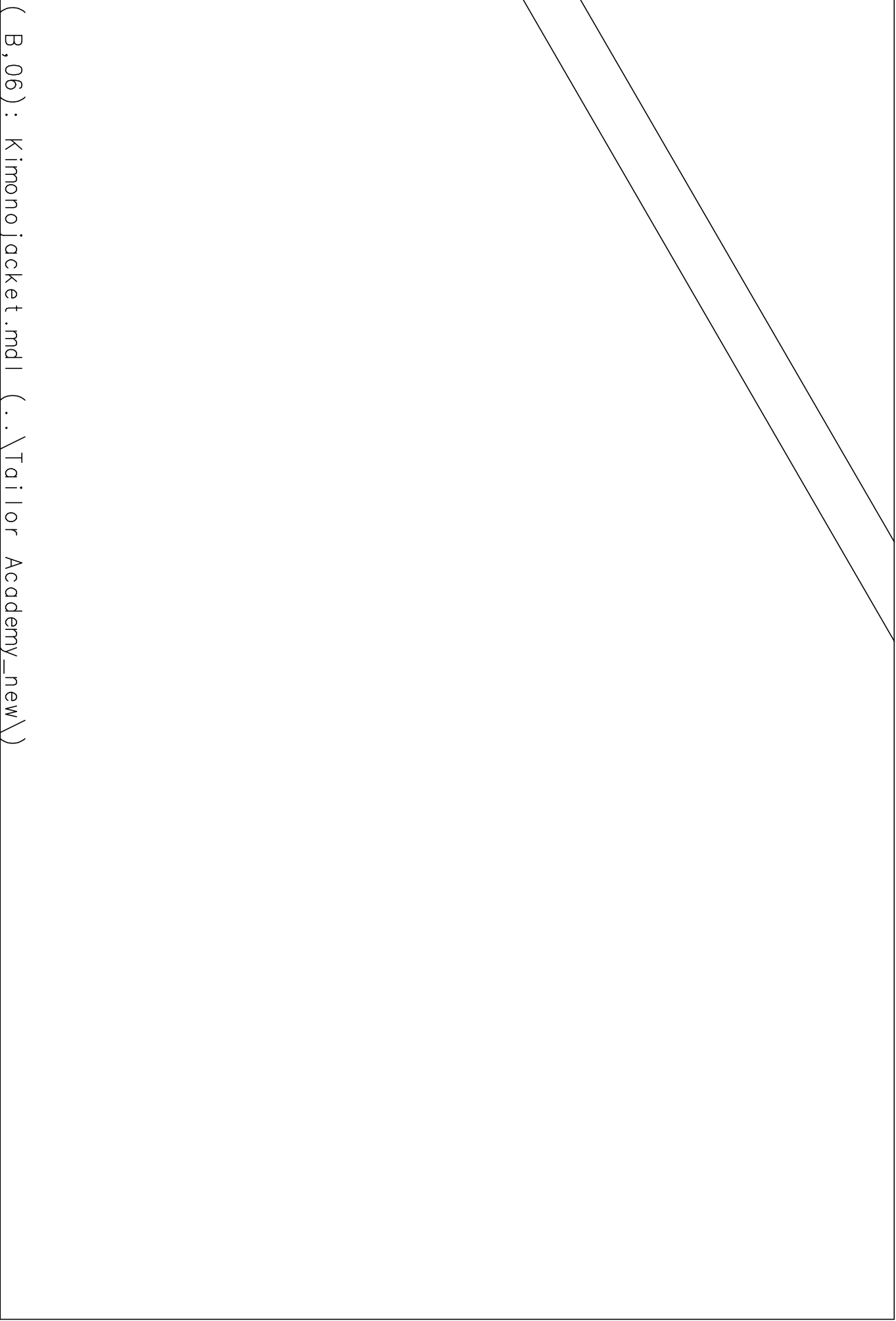
(B,03) : Kimono jacket.mdl (..\Tailor Academy_new\)

TO
K
p
1

(B,04) : Kimono jacket.mdl (..\Tailor Academy_new\)

(B,05) : Kimono jacket.mdl (..\Tailor Academy_new\)

GR



(B,06) : Kimono jacket.mdl (..\Tailor Academy_new\)

(B,07) : Kimono jacket.mdl (..\Tailor Academy_new\)

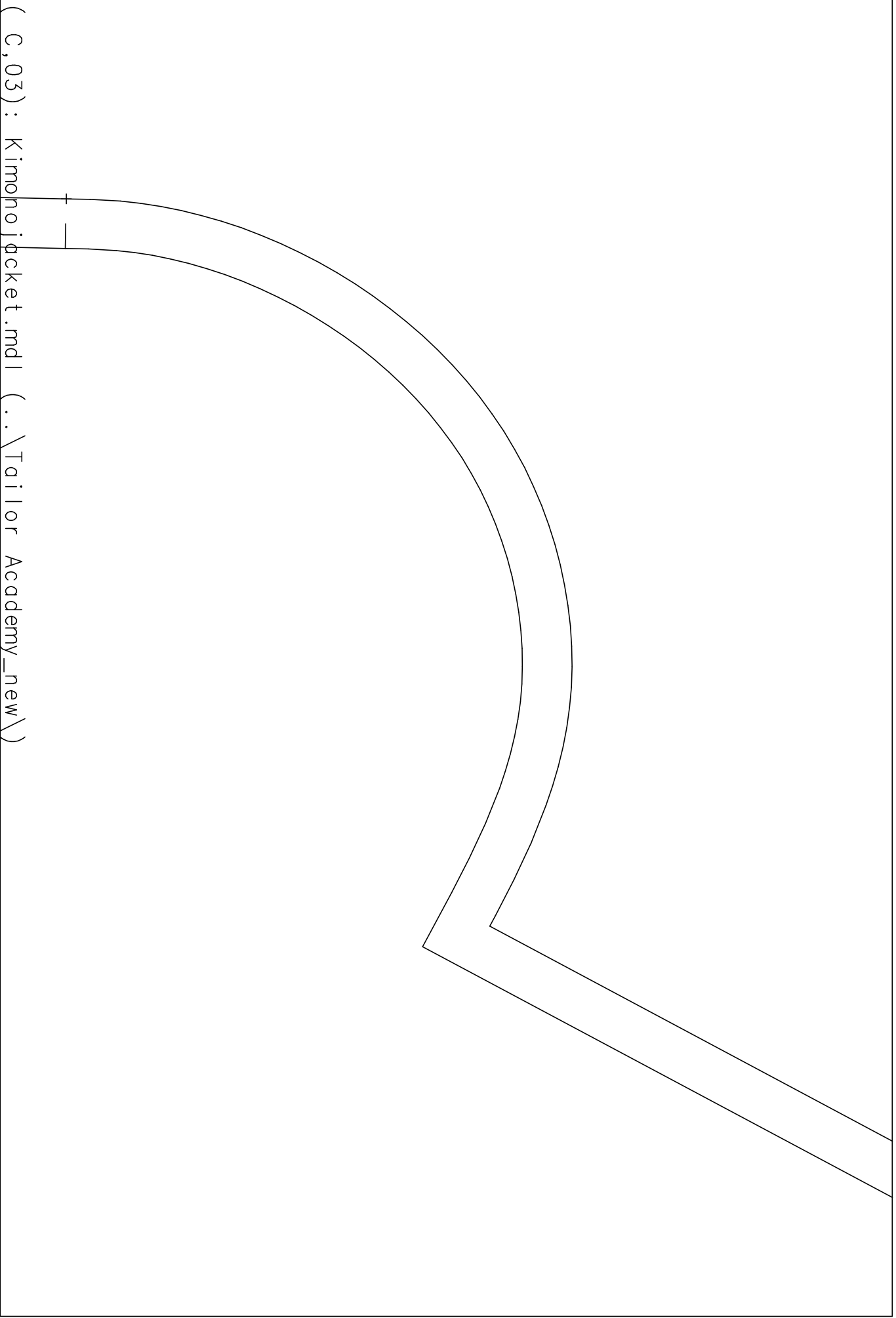
(C,01) : Kimono jacket.mdl (..\Tailor Academy_new\)

GR_S
Tailor Academy
Kimono jacket
collar
2 x outer fabr

center front

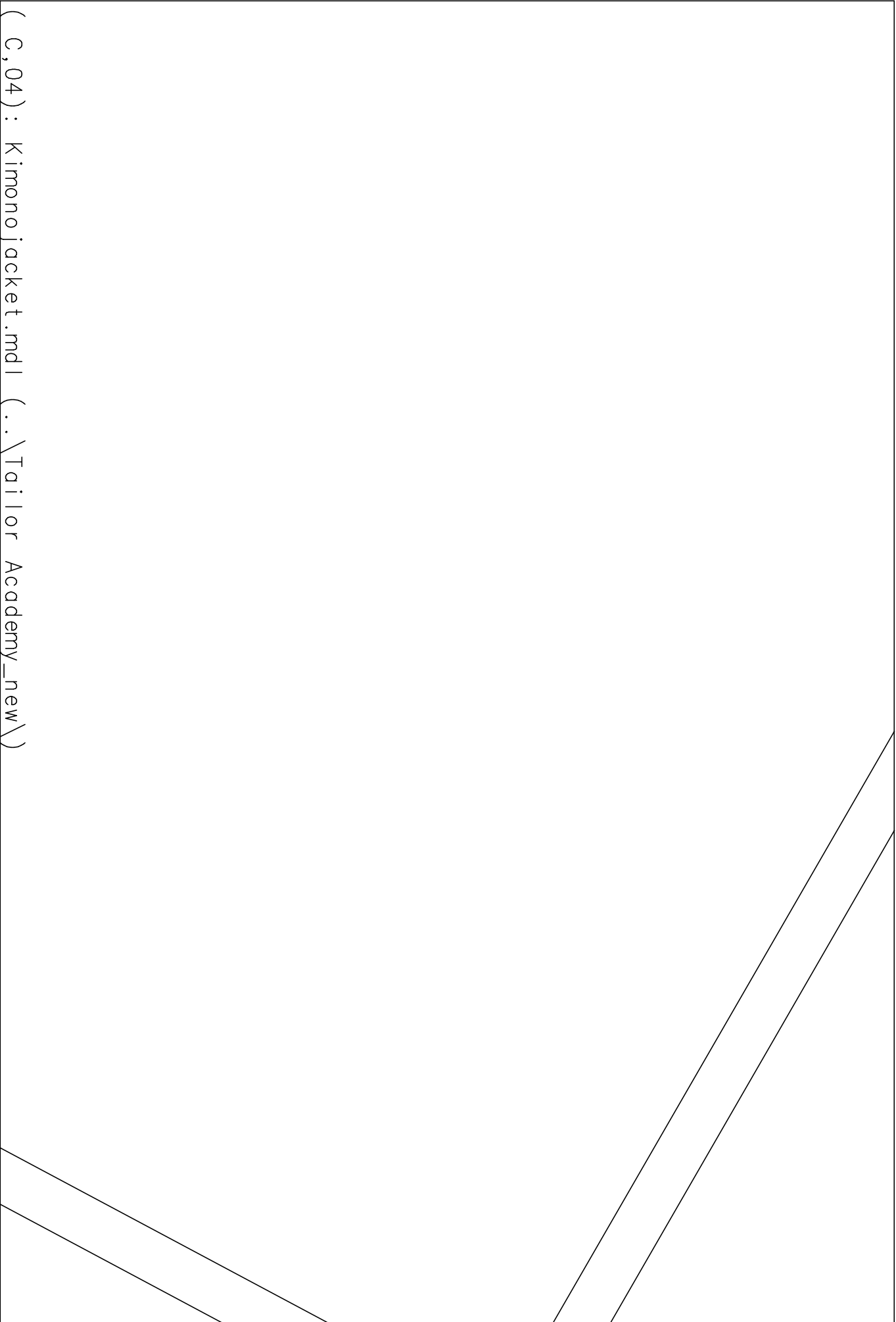


(C,02) : Kimonojacket.mdl (..\Tailor Academy_new\)
C —

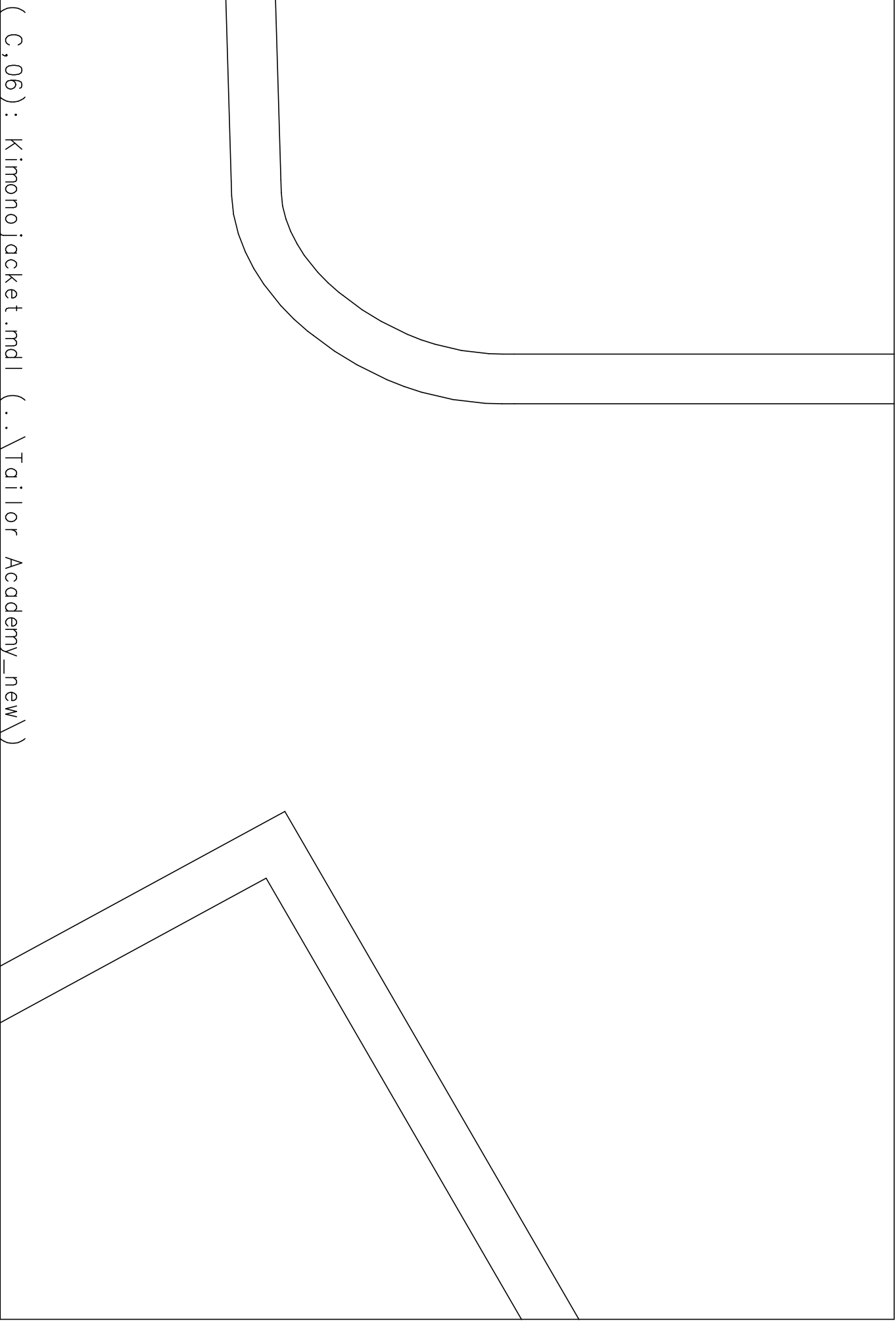


(C,03) : Kimono jacket.mdl (..\Tailor Academy_new\)

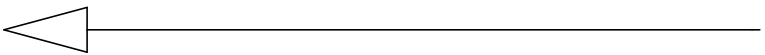
(C,04) : Kimono jacket.mdl (..\Tailor Academy_new\)



(C,05) : Kimono jacket.mdl (..\Tailor Academy_new\)

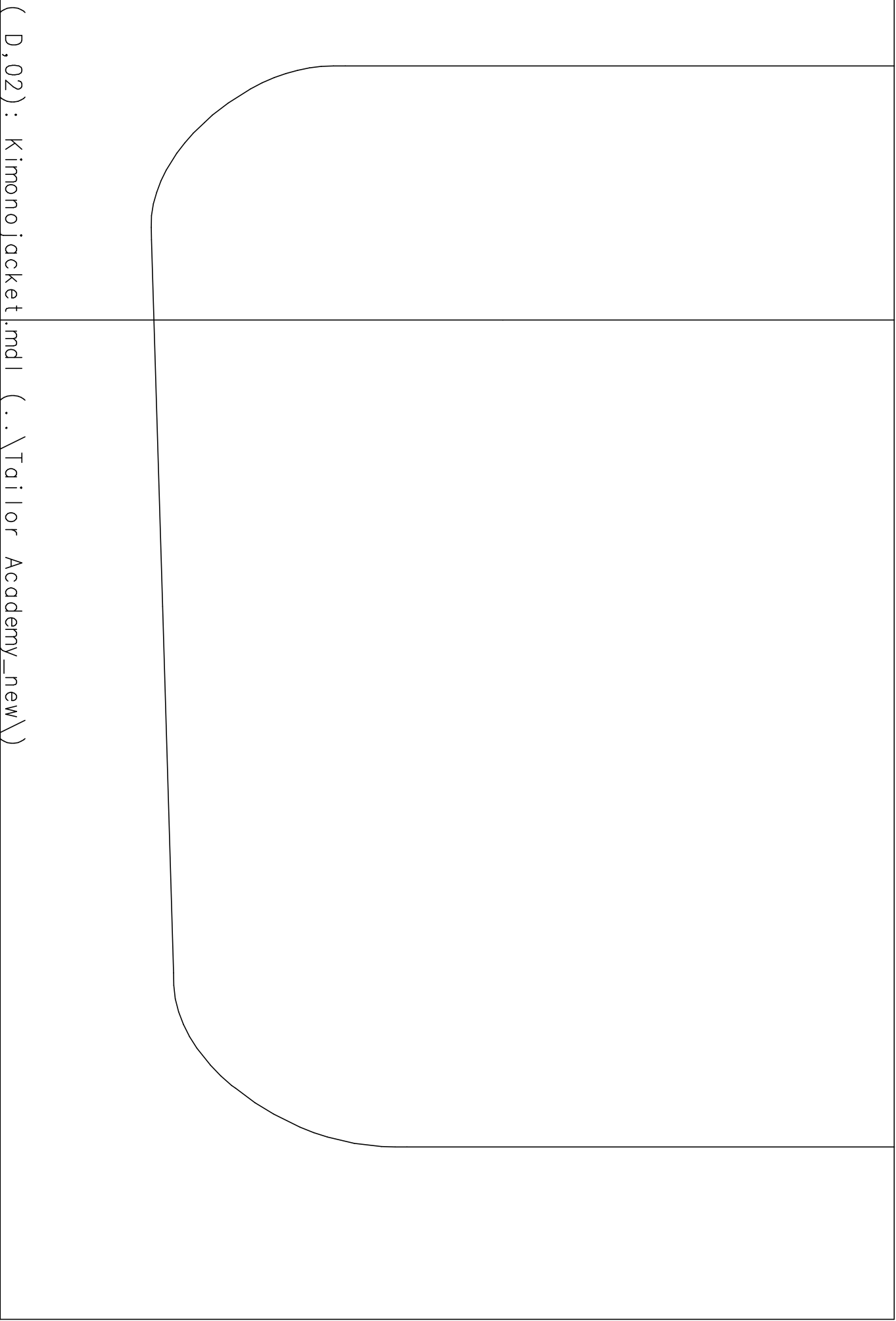


(C,06) : Kimono jacket.mdl (..\Tailor Academy_new\)



(C,07) : Kimono jacket.mdl (..\Tailor Academy_new\)

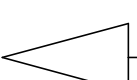
((D,01): Kimono jacket.mdl (..\Tailor Academy_new\))



(D,02) : Kimono jacket.mdl (..\Tailor Academy_new\)

outer fabric

(D,03) : Kimono jacket.mdl (..\Tailor Academy_new\)



S

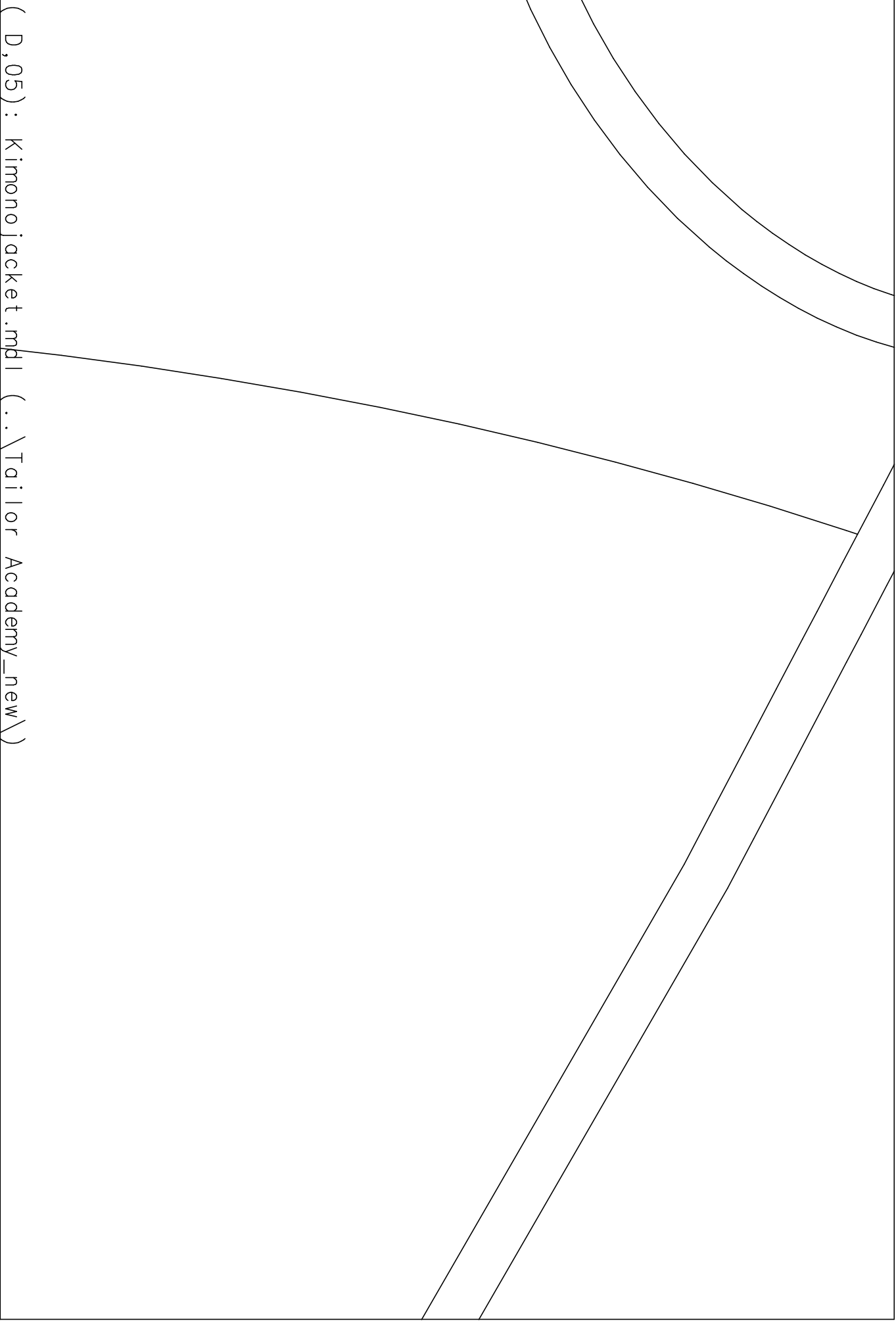
ior

mon

Academy

jack

(D,04): Kimono jacket. (Tailor Academy New)



GR_S
Tailor Academy
Kimono jacket
pocket
2 x outer fabric

front

(D,07): Kimono jacket.mdl (..\Tailor Academy_new\)

Test square
10cm x 10cm

(E,02): Kimono jacket.mdl (..\Tailor Academy_new\)

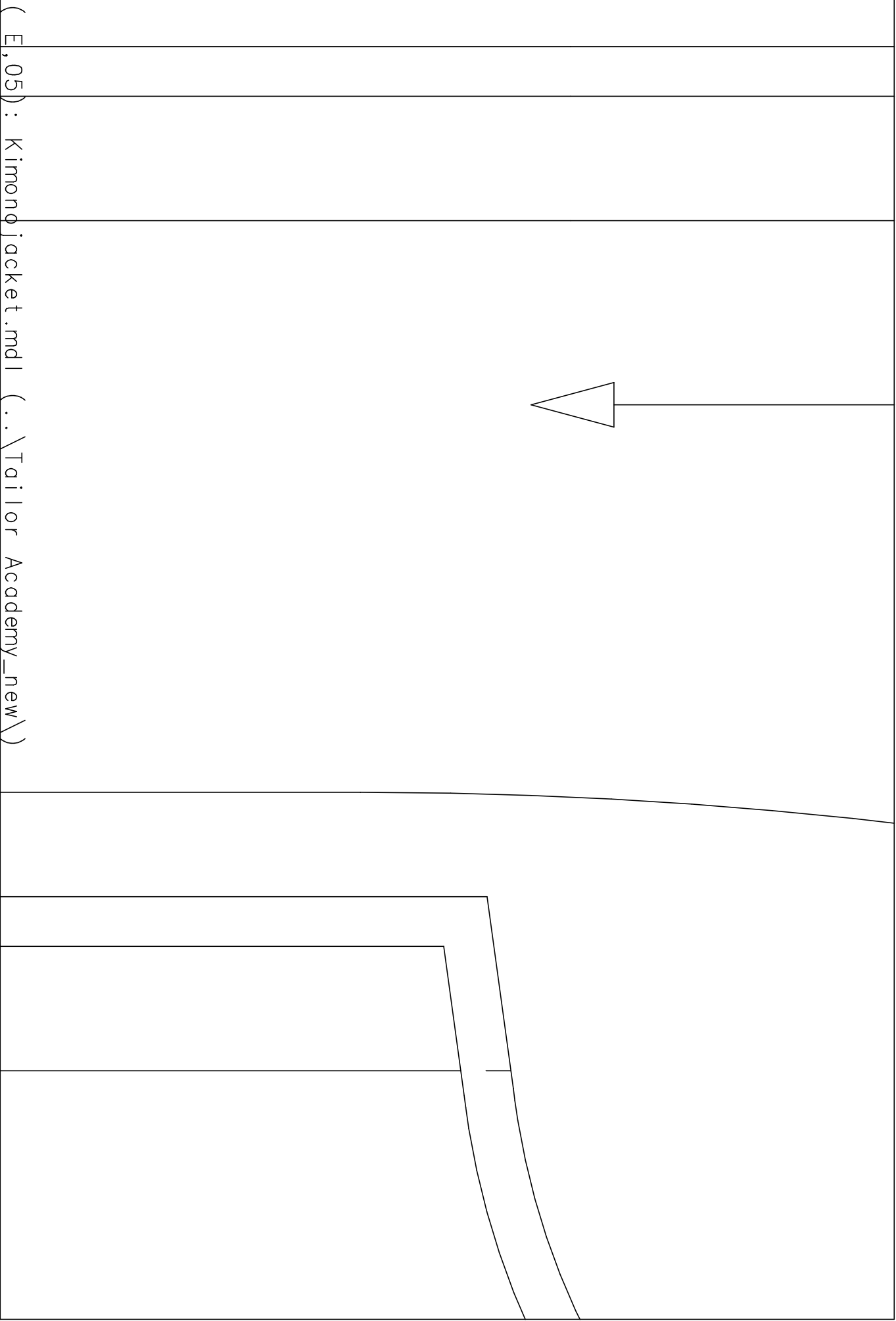
(E,03): Kimono jacket.mdl (..\Tailor Academy_new\)

GR_S

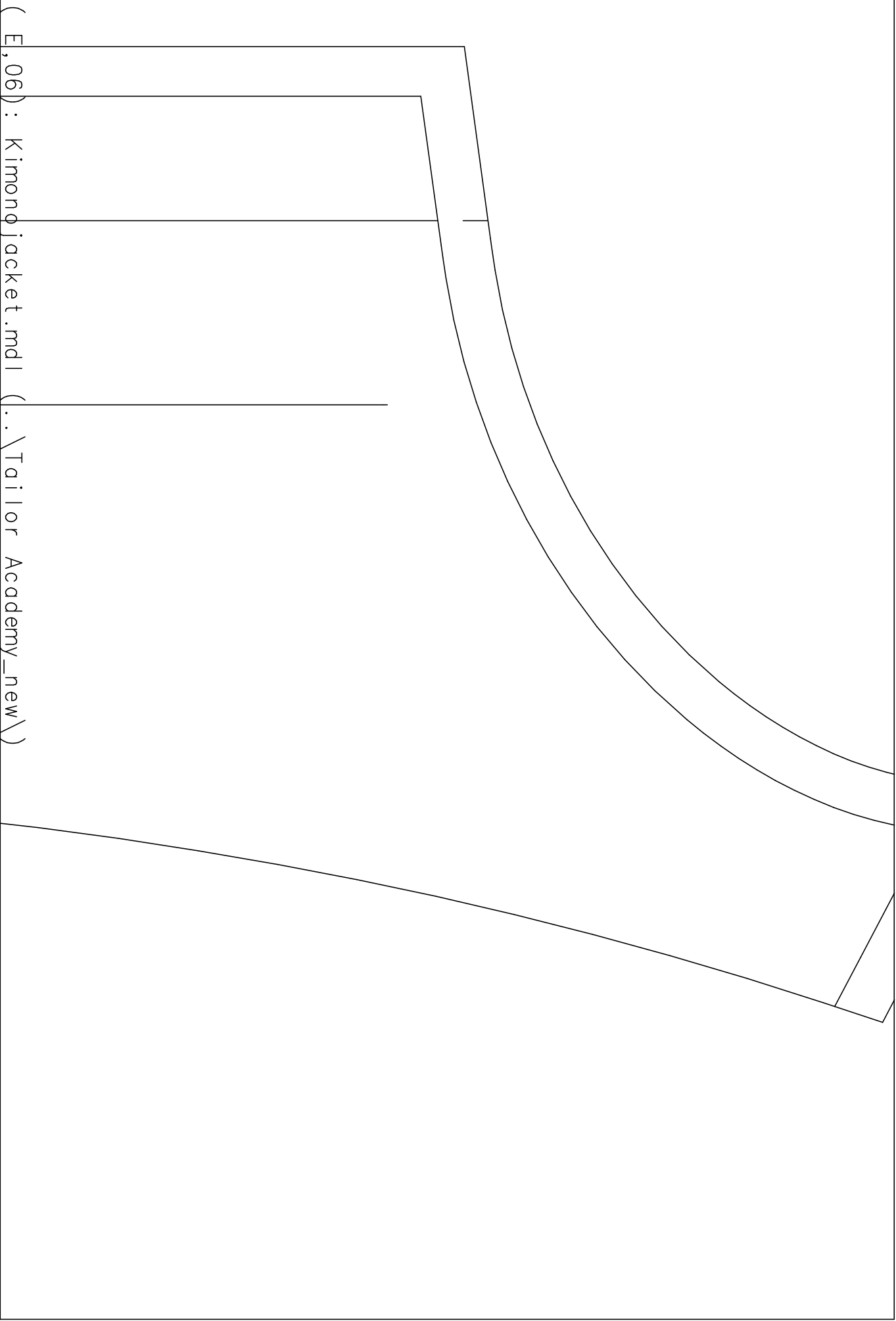
Tailor Acaden
Kimono jacket
front panel t
2 x outer fab

acing
ric

[illegible]



(E,05) : Kimono jacket.mdl (..\Tailor Academy_new\)



(E,06) : Kimono jacket.mdl (..\Tailor Academy_new\)

GR_S
Tailor Academy
Kimono jacket
back panel facing
1 x outer fabric

center front

(E,07) : Kimono jacket.mdl (..\Tailor Academy_new\)

